

BROOK TAVERNER

SINCE 1912

SHIRT & BLOUSE COLLECTION



2020

Working, together.

BROOK TAVERNER

SINCE 1912



SHIRT & BLOUSE COLLECTION

FLEXIBILITY

Whether looking for the classic finishing touch or a modern, up to date style across your team, our range of shirts and blouses offers the ultimate in flexibility. Meticulously curated to perfectly complement every one of our suiting collections, the Shirt & Blouse Collection offers a style and fit for every taste and budget.



PREMIUM COTTON / Pages 144 - 153

Collection of men's and women's shirts and blouses in luxurious, 100% cotton easy iron fabrics. Slim and classic fit options available.

- 12 Mix and match styles for men and women
- Slim and classic fit options for men, semi-fitted styles for women
- Herringbone and poplin fabrics, in up to 4 colours
- 100% Superfine Cotton, easy iron



NON-IRON COTTON / Pages 154 - 155

Created from beautiful 100% non-iron cotton fabrics, these brand-new shirts and blouse offer the ultimate in practicality, day in, day out.

- 4 Mix and match styles
- Slim and classic fit options for men, semi-fitted style for women
- Available in white
- 100% Cotton, non-iron
- 115gm fabric



CREPE DE CHINE & STRETCH TOPS / Pages 156 - 166

Beautiful crepe de chine blouses in a variety of colours and designs. Superb quality stretch tops offering day to day practicality.

- 6 Mix and match styles for women
- Available in up to 9 solid colours, and 4 print designs
- Crepe de chine and stretch-blend easy iron fabrics



STRETCH COTTON BLEND / Pages 167 - 169

Cotton-based fabric with high stretch properties, guaranteeing great wearer comfort and exceptional fitting shirts and blouses.

- 3 Mix and match styles
- Men's slim fit, and women's semi-fitted styles
- Available in 3 colours
- 57% Polyester / 39% Cotton / 4% Elastane, easy iron
- 120gm fabric



COTTON RICH / Pages 170 - 183

Go-to, flexible range of high quality shirts and blouses with a large selection of styles, colours and fits.

- 18 Mix and match styles
- Slim and classic fit options for men, semi-fitted styles for women
- Available in up to 14 colours, across 4 fabric designs
- Cotton rich fabrics, easy iron
- 120gm fabrics



BUSINESS CASUAL / Pages 184 - 193

A stunning selection of casual shirts in royal Oxford, gingham and chambray styles, designed to complement both our Business Casual and suiting collections.

- 10 Mix and match styles
- Tailored fit options for men and women
- Available in 9 colours
- Cotton rich and 100% cotton fabrics, easy iron



ONE COLLECTION / BUSINESS ESSENTIALS / Pages 194 - 199

Business essentials - premium quality shirts and blouses offering fantastic performance and value for money.

- 10 Mix and match styles
- Slim and Tailored fit
- Available in 2 colours
- 65% Polyester / 35% Cotton
- 115gm fabrics

The Shirt & Blouse Collection offers the ultimate in flexibility and guarantees exceptional performance in many market sectors, including:



PREMIUM COTTON

100% SUPERFINE COTTON / 130gm HERRINGBONE WEAVE - EASY IRON - MATCHING STYLES

MEN'S **ANDORA** Classic fit, Double cuff



- Double cuff with complementary silk cuff knots
- Taped seams
- Removable metal collar stiffeners
- Men's extra long sleeve available



A. White Herringbone



B. Blue Herringbone



F. Pink Herringbone



G. Lilac Herringbone



ANDORA SHIRT

Classic fit, Double cuff

Sizes:
14.5" - 20"
*Extra long sleeve 36.5"
at size 15.5"

Codes & Colours:
7656A White Herringbone
7656AL White Herringbone
Extra long sleeve 36.5"
7656B Blue Herringbone
7656BL Blue Herringbone
Extra long sleeve 36.5"
7656F Pink Herringbone
7656G Lilac Herringbone

7656A
ANDORA

CLASSIC FIT DOUBLE CUFF



7655B
ALTARE

CLASSIC FIT SINGLE CUFF



PREMIUM COTTON

100% SUPERFINE COTTON / 130gm HERRINGBONE WEAVE - EASY IRON - MATCHING STYLES

MEN'S **ALTARE** Classic fit, Single cuff



- Chest pocket
- Taped seams
- Removable metal collar stiffeners
- Men's extra long sleeve available



ALTARE SHIRT Classic fit, Single cuff

Sizes:
14.5" - 20"
*Extra long sleeve 36.5"
at size 15.5"

Codes & Colours:

7655A	White Herringbone
7655AL	White Herringbone Extra long sleeve 36.5"
7655B	Blue Herringbone
7655BL	Blue Herringbone Extra long sleeve 36.5"



A. White Herringbone



B. Blue Herringbone



7720A
PRATO

SLIM FIT DOUBLE CUFF



PREMIUM COTTON

100% SUPERFINE COTTON / 130gm HERRINGBONE WEAVE - EASY IRON - MATCHING STYLES

MEN'S **PRATO** Slim fit, Double cuff



- Double cuff with complementary silk cuff knots
- Taped seams
- Removable metal collar stiffeners



PRATO SHIRT Slim fit, Double cuff

Sizes:
14.5" - 18"

Codes & Colours:

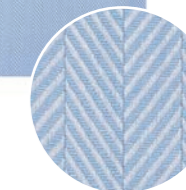
7720A	White Herringbone
7720B	Blue Herringbone



A. White Herringbone



B. Blue Herringbone





2247B VILLETA
2249B OZZERO

PREMIUM COTTON

100% SUPERFINE COTTON / 130gm HERRINGBONE WEAVE - EASY IRON - MATCHING STYLES

WOMEN'S **VILLETA** Semi fitted, Double cuff
WOMEN'S **OZZERO** Semi fitted, Short sleeve

- Double cuff with complementary silk cuff knots (Villeta)
- Taped seams
- Fly front



A. White Herringbone

B. Blue Herringbone

VILLETA BLOUSE
Semi fitted, Double cuff

Sizes:
6 - 24 regular

Codes & Colours:
2247A White Herringbone
2247B Blue Herringbone



OZZERO BLOUSE
Semi fitted, Short sleeve

Sizes:
6 - 24 regular

Codes & Colours:
2249A White Herringbone
2249B Blue Herringbone



2283F PROSECCO
7656F ANDORA

PREMIUM COTTON

100% SUPERFINE COTTON / 130gm HERRINGBONE WEAVE - EASY IRON - MATCHING STYLES

WOMEN'S **PROSECCO** Long sleeve, Single cuff
WOMEN'S **CHIANTI** Semi fitted, Short sleeve

- Taped seams
- Button up collars
- Fly front



F. Pink Herringbone

G. Lilac Herringbone

PROSECCO BLOUSE
Long sleeve, Single cuff,
Button up collar

Sizes:
6 - 24 regular

Codes & Colours:
2283F Pink Herringbone
2283G Lilac Herringbone



CHIANTI BLOUSE
Semi fitted, Short sleeve,
Button up collar

Sizes:
6 - 24 regular

Codes & Colours:
2284F Pink Herringbone
2284G Lilac Herringbone



2244A
TREVISO



PREMIUM COTTON

100% SUPERFINE COTTON / 120gm EASY IRON - MATCHING STYLES

WOMEN'S **TREVISO** Semi fitted, Single cuff

- Single 3 button cuff
- Classic button up collar



A. White



B. Blue



2244B
TREVISO

TREVISO BLOUSE
Semi fitted, Single cuff

Sizes:
6 - 24 regular

Codes & Colours:
2244A White
2244B Blue



7641A
CHEADLE

CLASSIC
FIT



7643B
CHELFORD

SLIM
FIT



PREMIUM COTTON

100% SUPERFINE COTTON / 120gm EASY IRON - MATCHING STYLES

MEN'S **CHESTER** Classic fit, Double cuff
MEN'S **CHEADLE** Classic fit, Single cuff

- Chest pocket (Cheadle)
- Taped seams
- Removable metal collar stiffeners
- Men's extra long sleeve available



A. White

CHESTER SHIRT
Classic fit, Double cuff

Sizes:
14.5" - 20"

Codes & Colours:
7642A White
7642B Blue



B. Blue

CHEADLE SHIRT
Classic fit, Single cuff

Sizes:
14.5" - 20"
*Extra long sleeve 36.5" at size 15.5"

Codes & Colours:
7641A White
7641AL White Extra long sleeve 36.5"
7641B Blue



MEN'S **CHELFORD** Slim fit, Double cuff
MEN'S **CHELSEA** Slim fit, Single cuff

- Taped seams
- Removable metal collar stiffeners



A. White

CHELFORD SHIRT
Slim fit, Double cuff

Sizes:
14.5" - 18"

Codes & Colours:
7643A White
7643B Blue



B. Blue

CHELSEA SHIRT
Slim fit, Single cuff

Sizes:
14.5" - 18"

Codes & Colours:
7762A White
7762B Blue





NON-IRON COTTON

100% COTTON / 120gm NON-IRON - MATCHING STYLES

WOMEN'S **SILVI** Semi fitted, Single cuff

- Non-iron
- Point collar
- Large size range 4R - 24R
- Machine washable at 40°



A. White



SILVI BLOUSE
Semi fitted, Single cuff

Sizes:
4 - 24 regular

Code & Colour:
2350A White



NON-IRON COTTON

100% COTTON / 120gm NON-IRON - MATCHING STYLES

MEN'S **ESTE** Slim fit, Long sleeve

MEN'S **MILANO** Slim fit, Short sleeve

MEN'S **ORTONA** Classic fit, Long sleeve

- Non-iron
- Chest pocket (Ortona)
- Large size range 14" - 18" (Este & Milano)
- Large size range 14.5" - 20" (Ortona)
- Machine washable at 40°



A. White

ESTE SHIRT
Slim fit, Single cuff

Sizes:
14" - 18"

Code & Colour:
7978A White



A. White

MILANO SHIRT
Slim fit, Short sleeve

Sizes:
14" - 18"

Code & Colour:
7996A White



A. White

ORTONA SHIRT
Classic fit, Single cuff

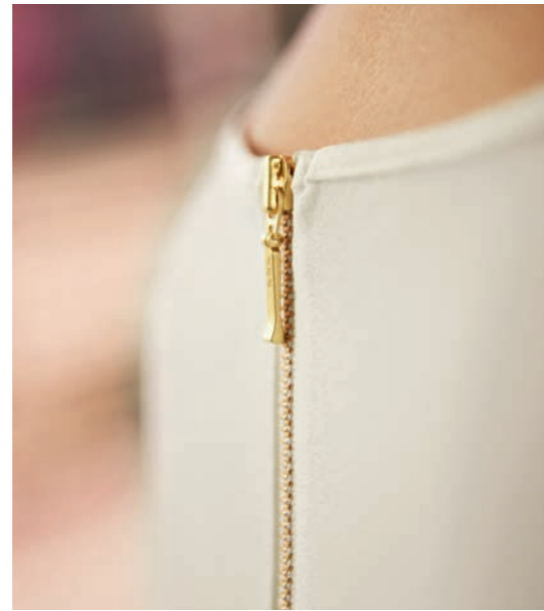
Sizes:
14.5" - 20"

Code & Colour:
7979A White





2264A
RIOLA



2265B
FELINA

CREPE DE CHINE

WHITE & CREAM - 94% POLYESTER / 6% ELASTANE / 205gm EASY CARE - STRETCH FABRIC

WOMEN'S **RIOLA** Long Sleeve with Round Neck and Front Pleat Detail
 WOMEN'S **FELINA** Short Sleeve with Round Neck and Front Pleat Detail



- 94% Polyester / 6% Elastane
- Sizes: 6R - 30R
- Long & Short sleeve women's blouses, round neck, front pleat detail, bust darts
- Single gold button cuff (Riola)
- Rear gold zip detail
- Easy care, machine washable at 30°

Sizes: 6 - 30 regular



A. White



B. Cream

RIOLA BLOUSE
Long sleeve

Sizes:
6 - 30 regular

Codes & Colours:
2264A White
2264B Cream



FELINA BLOUSE
Short sleeve

Sizes:
6 - 30 regular

Codes & Colours:
2265A White
2265B Cream





2300B
CAPRI



2300A
CAPRI



2301A
SIENA



2301B
SIENA

CREPE DE CHINE

WHITE & CREAM - 94% POLYESTER / 6% ELASTANE / 205gm EASY CARE - STRETCH FABRIC

WOMEN'S **CAPRI** Long Sleeve with Collar and Fly Front with Button Detail
 WOMEN'S **SIENA** Short Sleeve with Collar and Fly Front with Button Detail



- 94% Polyester / 6% Elastane
- Sizes: 6R - 30R
- Long & Short sleeve women's blouses with fly front with button detail
- Central back pleat
- Metallic button cuff (Capri)
- Easy care, machine washable at 30°

Sizes: 6 - 30 regular



B. Cream



A. White

CAPRI BLOUSE
Long sleeve

Sizes:
6 - 30 regular

Codes & Colours:
2300A White
2300B Cream



SIENA BLOUSE
Short sleeve

Sizes:
6 - 30 regular

Codes & Colours:
2301A White
2301B Cream



CREPE DE CHINE

SOLID COLOURS - 100% POLYESTER / 140gm EASY CARE - STRETCH FABRIC

WOMEN'S **FIRENZE** Long Sleeve with Collar and Fly Front with Button Detail
 WOMEN'S **VENEZIA** Short Sleeve with Collar and Fly Front with Button Detail



- 100% Polyester
- Sizes: 6R - 30R
- Long & Short sleeve women's blouses with fly front with button detail
- Central back pleat
- Metallic button cuff (Firenze)
- Easy care, machine washable at 30°

FIRENZE BLOUSE Long sleeve **Sizes:** 6 - 30 regular



Codes & Colours:
2298A Fuchsia

2298B Sky Blue

2298J Navy

VENEZIA BLOUSE Short sleeve **Sizes:** 6 - 30 regular



Codes & Colours:
2299A Fuchsia

2299B Sky Blue

2299J Navy



2298B
FIRENZE



2298A
FIRENZE



2299J
VENEZIA

BROOK TAVERNER

SHIRT & BLOUSE



2279J
ROMA



2280C
VERONA



2279E
ROMA



2279A
ROMA

CREPE DE CHINE

SOLID COLOURS - 100% POLYESTER / 140gm EASY CARE - STRETCH FABRIC

WOMEN'S **ROMA** Long Sleeve with Round Neck and Front Pleat Detail
 WOMEN'S **VERONA** Short Sleeve with Round Neck and Front Pleat Detail



- 100% Polyester with mechanical stretch
- Sizes: 6R - 30R
- Long & Short sleeve women's blouses with fly front pleat detail, bust darts
- Single gold button cuff (Roma)
- Rear gold zip detail
- Easy care, machine washable at 30°

ROMA BLOUSE Long sleeve **Sizes:** 6 - 30 regular



Codes & Colours:

- 2279A Fuchsia 2279B Sky Blue 2279C Burgundy 2279D Black 2279E Royal Blue 2279J Navy

VERONA BLOUSE Short sleeve **Sizes:** 6 - 30 regular



Codes & Colours:

- 2280A Fuchsia 2280B Sky Blue 2280C Burgundy 2280D Black 2280E Royal Blue 2280J Navy

CREPE DE CHINE

CO-ORDINATING DESIGNS - 100% POLYESTER / 140gm EASY CARE - STRETCH FABRIC

WOMEN'S **ROMA** Long Sleeve with Round Neck and Front Pleat Detail
 WOMEN'S **VERONA** Short Sleeve with Round Neck and Front Pleat Detail



- 100% Polyester with mechanical stretch
- Sizes: 6R - 30R
- Long & Short sleeve women's blouses with fly front pleat detail, bust darts
- Single gold button cuff (Roma)
- Rear gold zip detail
- Easy care, machine washable at 30°

ROMA BLOUSE Long sleeve **Sizes:** 6 - 30 regular



Codes & Colours:

2279H Royal Blue/Navy

2279F Sky Blue/Navy

2279G Burgundy/Navy

2279I Black/White

VERONA BLOUSE Short sleeve **Sizes:** 6 - 30 regular



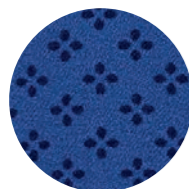
Codes & Colours:

2280H Royal Blue/Navy

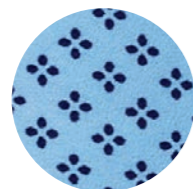
2280F Sky Blue/Navy

2280G Burgundy/Navy

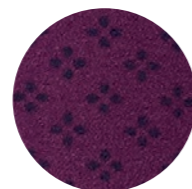
2280I Black/White



H. Royal Blue/Navy



F. Sky Blue/Navy



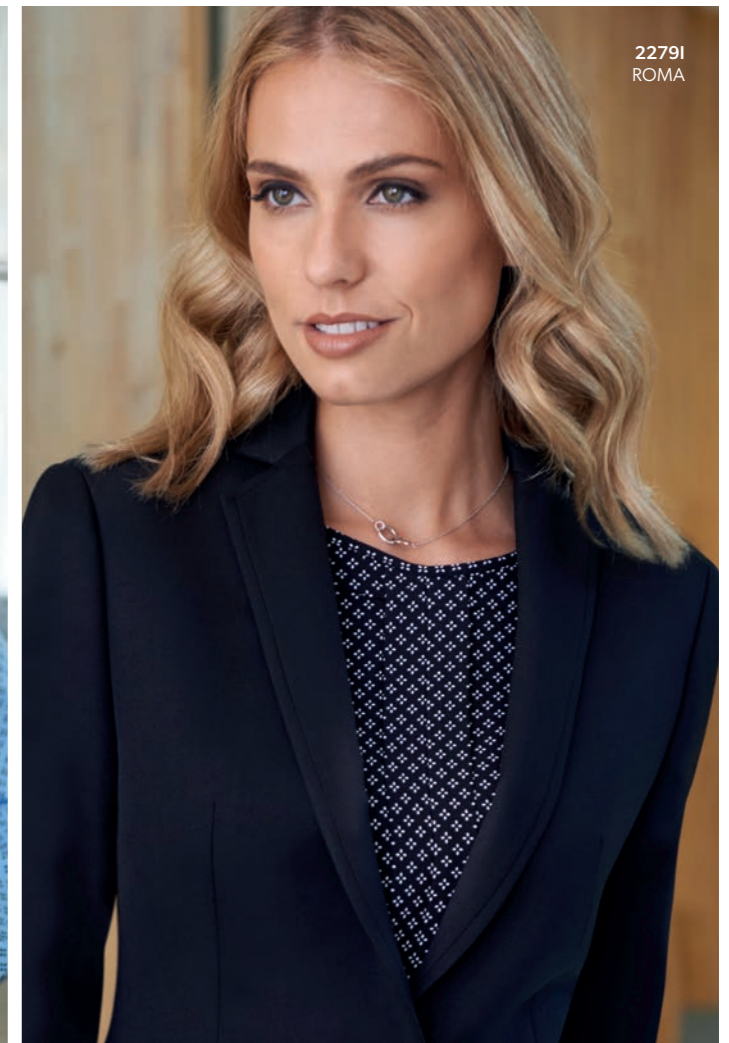
G. Burgundy/Navy



I. Black/White



2279F
ROMA



2279I
ROMA



2280G
VERONA



2280H
VERONA



2266D
MIRA



2267A
SASSA

STRETCH TOPS

95% VISCOSE / 5% ELASTANE / 220gm EASY CARE - STRETCH FABRIC

WOMEN'S **MIRA** 3/4 sleeve
WOMEN'S **SASSA** Short sleeve

- 95% Viscose / 5% Elastane
- Sizes: XS, S, M, L, XL, XXL
- 3/4 & Short sleeve women's stretch tops
- Machine washable at 30°



D. Black

MIRA STRETCH TOP
3/4 sleeve

Sizes:
XS, S, M, L, XL, XXL

Codes & Colours:
2266A White
2266D Black



A. White

SASSA STRETCH TOP
Short sleeve

Sizes:
XS, S, M, L, XL, XXL

Codes & Colours:
2267A White
2267D Black



2251A
FRANCA

STRETCH COTTON BLEND

57% POLYESTER / 39% COTTON / 4% ELASTANE / 120gm EASY IRON - STRETCH FABRIC

WOMEN'S **FRANCA** Semi fitted, Single cuff

- Fly front
- Contrast White rounded collar
- Contrast White single button cuff



A. White



FRANCA BLOUSE
Semi fitted, Single cuff

Sizes:
6 - 24 regular

Code & Colour:
2251A White with front panel stripe



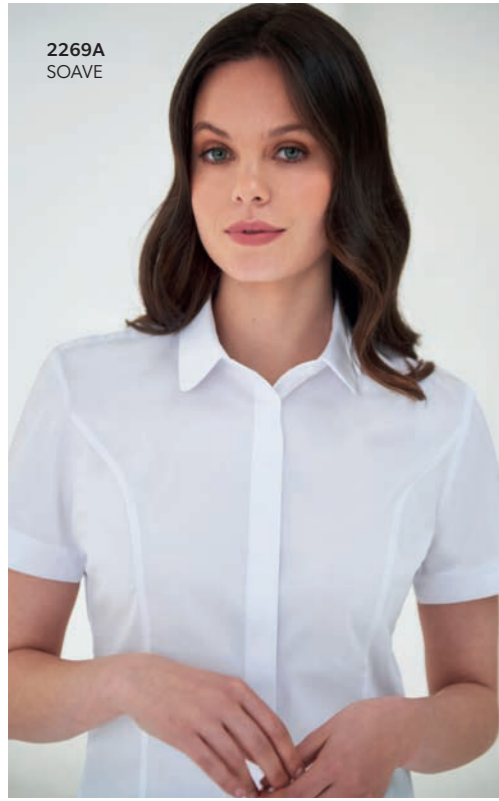
STRETCH COTTON BLEND

57% POLYESTER / 39% COTTON / 4% ELASTANE / 120gm EASY IRON - STRETCH FABRIC

WOMEN'S **TREVI** Semi fitted, Long sleeve
 WOMEN'S **SOAVE** Semi fitted, Short sleeve



- Fly front
- Rounded collar
- Single button cuff (Trevi)



2269A
SOAVE



2268D
TREVI



2268B
TREVI



A. White



B. Sky Blue



D. Black

TREVI BLOUSE
Semi fitted, Single cuff

Sizes:
6 - 24 regular

Codes & Colours:
2268A White
2268B Sky Blue
2268D Black



SOAVE BLOUSE
Semi fitted, Short sleeve

Sizes:
6 - 24 regular

Codes & Colours:
2269A White
2269B Sky Blue
2269D Black



**3 COLOURS
IN BOTH
STYLES**

STRETCH COTTON BLEND

57% POLYESTER / 39% COTTON / 4% ELASTANE / 120gm EASY IRON - STRETCH FABRIC

MEN'S **PISA** Slim fit, Long sleeve



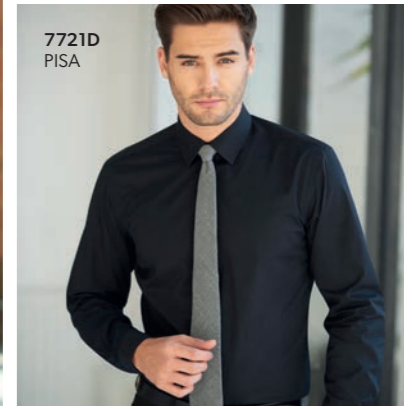
- Single 2 button cuff
- Twin rear darts for defined silhouette



7721B
PISA



7721A
PISA



7721D
PISA



A. White



B. Sky Blue



D. Black

PISA SHIRT
Slim fit, Single cuff

Sizes:
14.5" - 18"

Codes & Colours:
7721A White
7721B Sky Blue
7721D Black

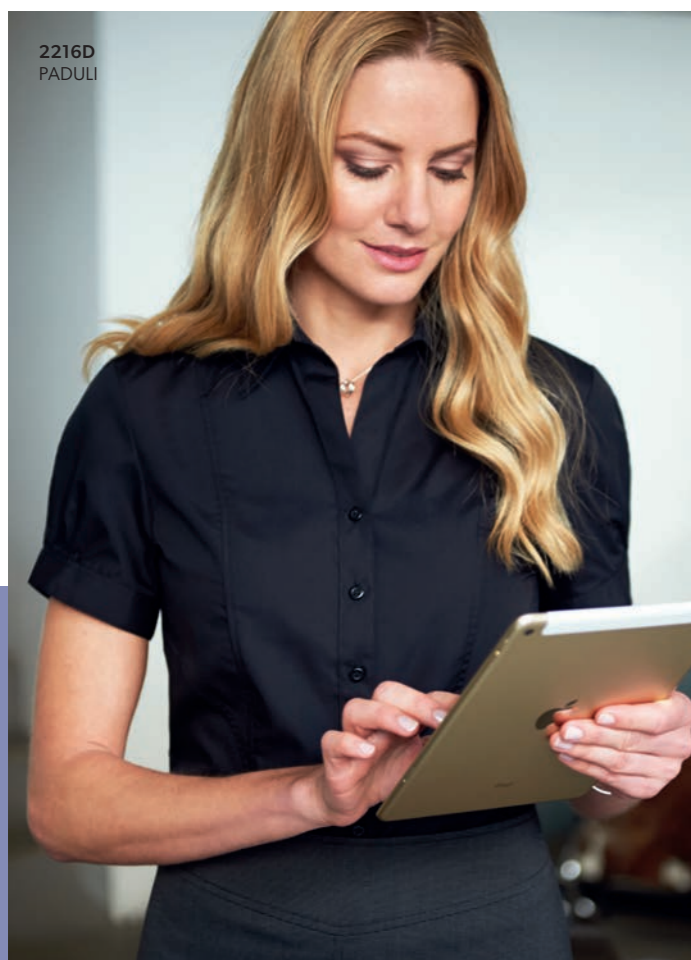




2214F
PALENA



2214A
PALENA



2216D
PADULI



2216E
PADULI

COTTON RICH

55% COTTON / 45% POLYESTER / 120gm EASY IRON - MATCHING STYLES

WOMEN'S **PALENA** BLOUSE Semi fitted, Long sleeve
WOMEN'S **PADULI** BLOUSE Semi fitted, Short sleeve



- Single 2 button cuff (Palena)
- Short sleeve with adjustable cuff (Paduli)

PALENA BLOUSE Semi fitted, Long sleeve **Sizes:** 4 - 30 regular *Black 6 - 24 regular



Codes & Colours:

- 2214A White
- 2214E Blue
- 2214F Lilac
- 2214D Black

PADULI BLOUSE Semi fitted, Short sleeve **Sizes:** 4 - 30 regular *Black 6 - 24 regular



Codes & Colours:

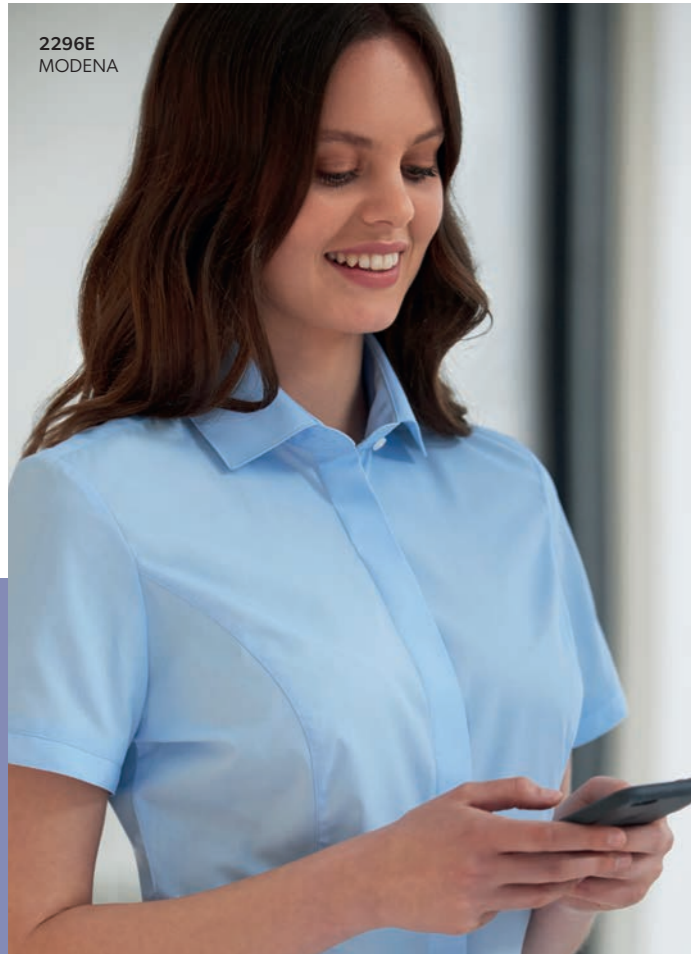
- 2216A White
- 2216E Blue
- 2216F Lilac
- 2216D Black



2295H
PARMA



2295A
PARMA



2296E
MODENA



2296G
MODENA

COTTON RICH

55% COTTON / 45% POLYESTER / 120gm EASY IRON - MATCHING STYLES

WOMEN'S **PARMA** BLOUSE Semi fitted, Long sleeve
WOMEN'S **MODENA** BLOUSE Semi fitted, Short sleeve



- Fly front
- Button up collar
- Single button cuff (Parma)
- Short sleeve (Modena)

PARMA BLOUSE Semi fitted, Long sleeve **Sizes:** 6 - 24 regular



Codes & Colours:

2295A White

2295E Blue

2295G Grey

2295H Navy

MODENA BLOUSE Semi fitted, Short sleeve **Sizes:** 6 - 24 regular



Codes & Colours:

2296A White

2296E Blue

2296G Grey

2296H Navy

COTTON RICH

55% COTTON / 45% POLYESTER / 120gm EASY IRON - MATCHING STYLES

MEN'S **ALBA** Slim fit, Long sleeve



- Twin rear darts for defined silhouette
- Semi cutaway collar



A. White



D. Black



E. Blue



F. Lilac



G. Grey



H. Navy

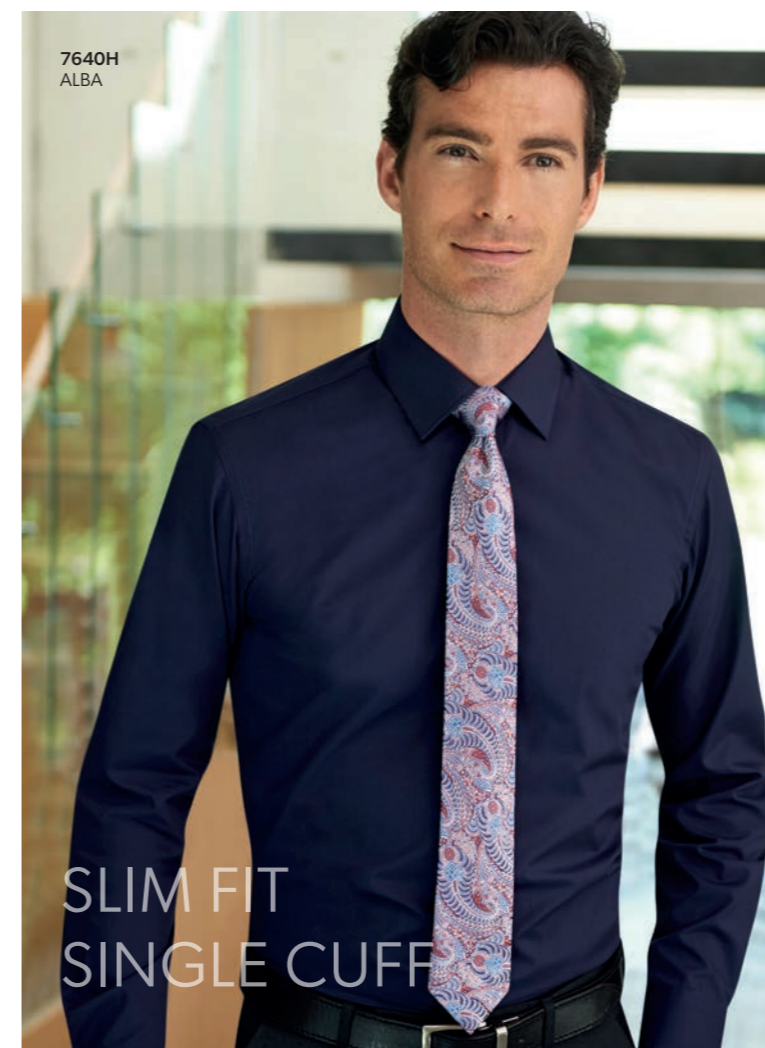
ALBA SHIRT
Slim fit, Single cuff

Sizes:
14" - 18"

Codes & Colours:
7640A White
7640D Black
7640E Blue
7640F Lilac
7640G Grey
7640H Navy



HE WEARS
ALBA
SLIM FIT SHIRT
SHE WEARS
PARMA
SEMI FITTED BLOUSE



7640H
ALBA

SLIM FIT
SINGLE CUFF



7640A
ALBA

SHIRT & BLOUSE

BROOK TAVERNER

COTTON RICH

55% COTTON / 45% POLYESTER / 120gm EASY IRON - MATCHING STYLES

MEN'S **RAPINO** Classic fit, Long sleeve
 MEN'S **ROSELLO** Classic fit, Short sleeve



- Chest pocket
- Single button cuff (Rapino)



A. White



D. Black



E. Blue



F. Lilac



G. Grey



H. Navy

RAPINO SHIRT
 Classic fit, Single cuff

Sizes:
 14.5" - 20"



Codes & Colours:
 7539A White
 7539D Black
 7539E Blue
 7539F Lilac
 7539G Grey
 7539H Navy

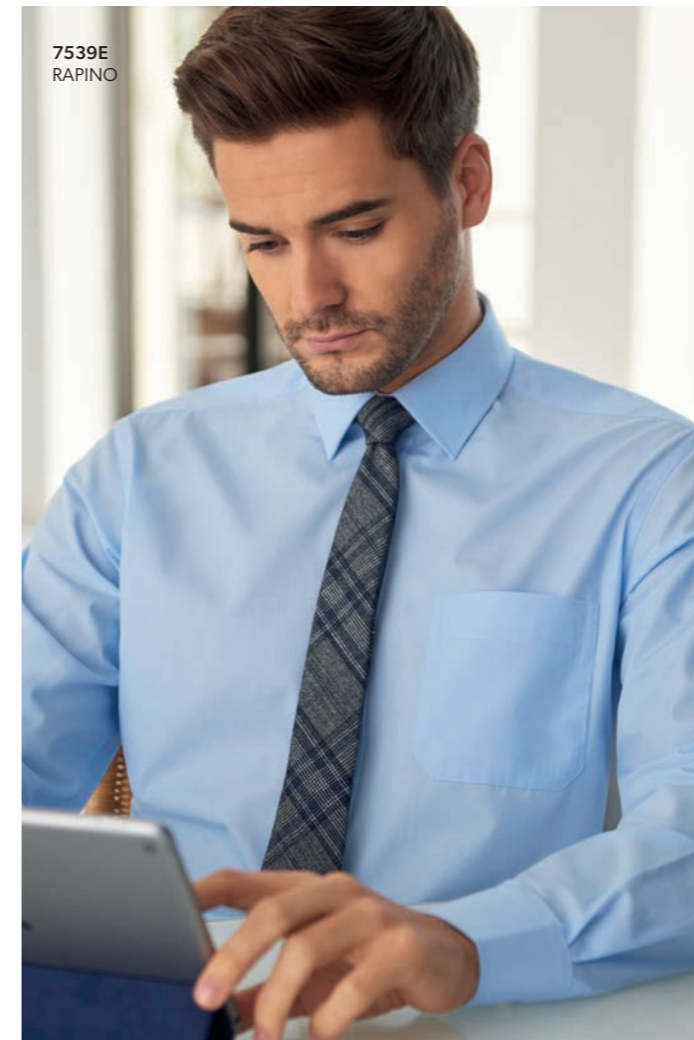
ROSELLO SHIRT
 Classic fit, Short sleeve

Sizes:
 14.5" - 20"



Codes & Colours:
 7541A White
 7541D Black
 7541E Blue
 7541F Lilac
 7541G Grey
 7541H Navy

6 COLOURS
 IN BOTH
 STYLES



7539E
 RAPINO



7539D
 RAPINO



7541G
 ROSELLO



7541F
 ROSELLO



2281A
LUGANO
2282A
NAPOLI

COTTON RICH

60% COTTON / 40% POLYESTER / 120gm EASY IRON - MATCHING STYLES

WOMEN'S **LUGANO** BLOUSE Semi fitted, Long sleeve
WOMEN'S **NAPOLI** BLOUSE Semi fitted, Short sleeve

- Fly front
- Button up collar



B. Blue Houndstooth



A. Lilac Houndstooth



D. Black Houndstooth

LUGANO BLOUSE
Semi fitted, Long sleeve

Sizes:
6 - 24 regular

Codes & Colours:

2281A Lilac Houndstooth
2281B Blue Houndstooth
2281D Black Houndstooth



NAPOLI BLOUSE
Semi fitted, Short sleeve

Sizes:
6 - 24 regular

Codes & Colours:

2282A Lilac Houndstooth
2282B Blue Houndstooth
2282D Black Houndstooth



7755B
MONZA



7755D
MONZA

COTTON RICH

60% COTTON / 40% POLYESTER / 120gm EASY IRON - MATCHING STYLES

MEN'S **MONZA** SHIRT Slim fit, Long sleeve

- Single 2 button cuff
- Twin rear darts for defined silhouette



B. Blue Houndstooth



A. Lilac Houndstooth



D. Black Houndstooth

MONZA SHIRT
Slim fit, Long sleeve

Sizes:
14" - 18"

Codes & Colours:

7755A Lilac Houndstooth
7755B Blue Houndstooth
7755D Black Houndstooth





7542A
ROCCELLA
2217A
PESCARA



2215B
PERANO



7540C
RUFINA

COTTON RICH

60% COTTON / 40% POLYESTER / 120gm EASY IRON - MATCHING STYLES

WOMEN'S **PERANO** BLOUSE Semi fitted, Long sleeve
WOMEN'S **PESCARA** BLOUSE Semi fitted, Short sleeve

- Single 2 button cuff (Perano)
- Short sleeve with adjustable cuff (Pescara)



A. White/Grey Stripe



B. Pink/Grey Stripe



C. Blue/White Stripe

PERANO BLOUSE
Semi fitted, Long sleeve

Sizes:
6 - 24 regular

Codes & Colours:
2215A White/Grey Stripe
2215B Pink/Grey Stripe
2215C Blue/White Stripe



PESCARA BLOUSE
Semi fitted, Short sleeve

Sizes:
6 - 24 regular

Codes & Colours:
2217A White/Grey Stripe
2217B Pink/Grey Stripe
2217C Blue/White Stripe



MEN'S **RUFINA** Classic fit, Long sleeve
MEN'S **ROCCELLA** Classic fit, Short sleeve

- Chest pocket
- Single 2 button cuff (Rufina)



A. White/Grey Stripe



C. Blue/White Stripe

RUFINA SHIRT
Classic fit, Long sleeve

Sizes:
14.5" - 20"

Codes & Colours:
7540A White/Grey Stripe
7540C Blue/White Stripe



ROCCELLA SHIRT
Classic fit, Short sleeve

Sizes:
14.5" - 20"

Codes & Colours:
7542A White/Grey Stripe
7542C Blue/White Stripe



COTTON RICH

60% COTTON / 40% POLYESTER / 120gm EASY IRON - MATCHING STYLES

WOMEN'S **CAMPANIA** BLOUSE Semi fitted, Long sleeve

WOMEN'S **LIGURIA** BLOUSE Semi fitted, Short sleeve

• Double button fastening



C. Black/White Stripe

CAMPANIA BLOUSE
Semi fitted, Long sleeve

Sizes:
6 - 24 regular

Codes & Colours:
2239A White waffle weave
2239C Black/White Stripe



A. White waffle weave

LIGURIA BLOUSE
Semi fitted, Short sleeve

Sizes:
6 - 24 regular

Codes & Colours:
2240A White waffle weave
2240C Black/White Stripe



MEN'S **MANTOVA** Classic fit, Long sleeve

MEN'S **SAVONA** Classic fit, Short sleeve

• Chest pocket
• Double button cuff (Mantova)



A. White waffle weave

MANTOVA SHIRT
Classic fit, Long sleeve

Sizes:
14.5" - 20"

Codes & Colours:
7594A White waffle weave
7594C Black/White Stripe



C. Black/White Stripe

SAVONA SHIRT
Classic fit, Short sleeve

Sizes:
14.5" - 20"

Codes & Colours:
7595C Black/White Stripe



2240C
LIGURIA



7594A
MANTOVA



2240A
LIGURIA



7594C
MANTOVA



2319F
ASPEN



2319B
ASPEN



2320A
VICTORIA



2320C
VICTORIA

BUSINESS CASUAL / WOMEN'S - ROYAL OXFORD

60% COTTON / 40% POLYESTER / 125gm EASY IRON - MATCHING STYLES

WOMEN'S **ASPEN** Tailored fit, Long sleeve
WOMEN'S **VICTORIA** Tailored fit, Short sleeve

- Tailored fit
- French placket
- Contrast detailing



A. White

B. Blue

C. Grey



E. Sky Blue

F. Red

ASPEN SHIRT
Tailored fit, Long sleeve



Sizes:
6 - 26* regular
*Size 26 available in
White and Sky Blue only

Codes & Colours:
2319A White
2319B Blue
2319C Grey
2319E Sky Blue
2319F Red

VICTORIA SHIRT
Tailored fit, Short sleeve



Sizes:
6 - 26* regular
*Size 26 available in
White and Sky Blue only

Codes & Colours:
2320A White
2320B Blue
2320C Grey
2320E Sky Blue
2320F Red

BUSINESS CASUAL / MEN'S - ROYAL OXFORD

60% COTTON / 40% POLYESTER / 125gm EASY IRON - MATCHING STYLES

MEN'S **TORONTO** Tailored fit, Long sleeve

MEN'S **CALGARY** Tailored fit, Short sleeve

- Tailored fit
- Button down collar
- French placket
- Contrast detailing



A. White

B. Blue

C. Grey



E. Sky Blue

F. Red

TORONTO SHIRT

Tailored fit, Long sleeve

Sizes:
14" - 22"*
*Size 21" & 22" available in
White and Sky Blue only

Codes & Colours:
7882A White
7882B Blue
7882C Grey
7882E Sky Blue
7882F Red



CALGARY SHIRT

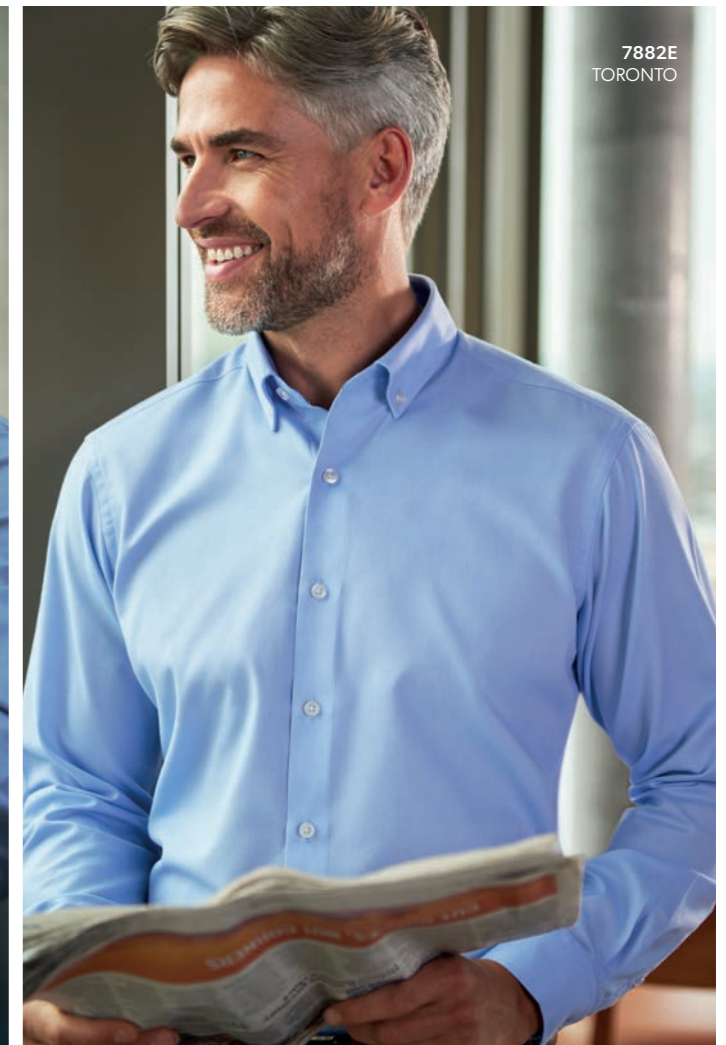
Tailored fit, Short sleeve

Sizes:
14" - 22"*
*Size 21" & 22" available in
White and Sky Blue only

Codes & Colours:
7883A White
7883B Blue
7883C Grey
7883E Sky Blue
7883F Red



7882B
TORONTO



7882E
TORONTO



7882C
TORONTO



7883A
CALGARY



BUSINESS CASUAL / WOMEN'S - GINGHAM

60% COTTON / 40% POLYESTER / 125gm EASY IRON - MATCHING STYLES

WOMEN'S **KANSAS** Tailored fit, Long sleeve

- Tailored fit
- Long sleeve
- Bias cut detailing
- Contrast thread detail



A. Blue Gingham



B. Brown Gingham



C. Red Gingham

WOMEN'S **TULSA** Tailored fit, Short sleeve

- Tailored fit
- Short sleeve
- Bias cut detailing
- Contrast thread detail



A. Blue Gingham



B. Brown Gingham



C. Red Gingham

KANSAS SHIRT
Tailored fit, Long sleeve

Sizes:
6 - 24 regular

Codes & Colours:
2321A Blue Gingham
2321B Brown Gingham
2321C Red Gingham



TULSA SHIRT
Tailored fit, Short sleeve

Sizes:
6 - 24 regular

Codes & Colours:
2322A Blue Gingham
2322B Brown Gingham
2322C Red Gingham



BUSINESS CASUAL / MEN'S - GINGHAM

60% COTTON / 40% POLYESTER / 125gm EASY IRON - MATCHING STYLES

MEN'S **MONTANA** Tailored fit, Long sleeve

- Tailored fit
- Long sleeve
- Bias cut detailing
- Chest pocket
- Contrast thread detail



A. Blue Gingham



B. Brown Gingham



C. Red Gingham



7884B
MONTANA



7885C
PORTLAND

MEN'S **PORTLAND** Tailored fit, Short sleeve

- Tailored fit
- Short sleeve
- Bias cut detailing
- Chest pocket
- Contrast thread detail



A. Blue Gingham



B. Brown Gingham



C. Red Gingham



7884A, B, C
MONTANA

MONTANA SHIRT
Tailored fit, Long sleeve

Sizes:
14" - 20"

Codes & Colours:
7884A Blue Gingham
7884B Brown Gingham
7884C Red Gingham



PORTLAND SHIRT
Tailored fit, Short sleeve

Sizes:
14" - 20"

Codes & Colours:
7885A Blue Gingham
7885B Brown Gingham
7885C Red Gingham





BUSINESS CASUAL / CHAMBRAY SHIRTS

100% COTTON / 140gm EASY IRON - MATCHING STYLES

MEN'S **JASPER** Tailored fit, Long sleeve

WOMEN'S **BANFF** Tailored fit, Long sleeve

- Tailored fit
- Chest pocket with button (Jasper)
- Faux horn buttons
- Contrast button detailing



A. Denim



A. Denim

JASPER SHIRT
Tailored fit, Long sleeve

Sizes:
14" - 20"

Codes & Colours:
7886A Denim

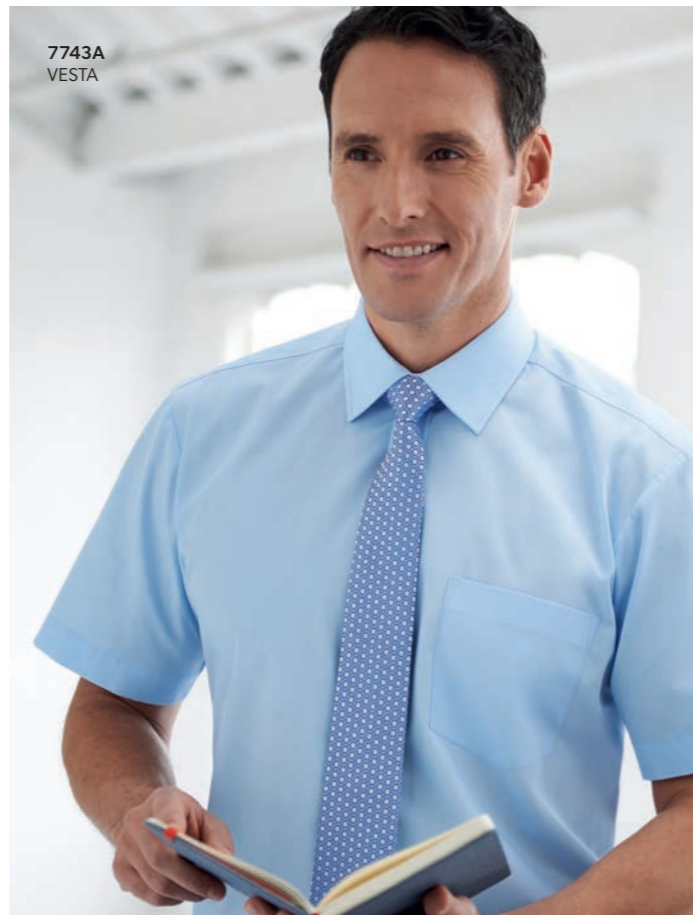


BANFF SHIRT
Tailored fit, Long sleeve

Sizes:
6 - 24 regular

Codes & Colours:
2323A Denim





ONE COLLECTION / BUSINESS ESSENTIALS

65% POLYESTER / 35% COTTON / 115gm MATCHING STYLES

MEN'S **JUNO** Classic fit, Long sleeve
 MEN'S **VESTA** Classic fit, Short sleeve

- 2 Button cuff (Juno)
- Chest pocket
- Classic fit available up to collar size 22"
- Machine washable at 40°

CLASSIC FIT

AVAILABLE UP TO SIZE 22"



A. White

JUNO SHIRT
 Classic fit, Long sleeve

Sizes:
 14.5" - 22"

Codes & Colours:
 7742A White
 7742B Blue



B. Blue

VESTA SHIRT
 Classic fit, Short sleeve

Sizes:
 14.5" - 22"

Codes & Colours:
 7743A White
 7743B Blue



ONE COLLECTION / BUSINESS ESSENTIALS

65% POLYESTER / 35% COTTON / 115gm MATCHING STYLES

MEN'S **VULCAN** Slim fit, Long sleeve

- 2 Button cuff
- Slim fit available up to collar size 18"
- Machine washable at 40°

SLIM FIT

AVAILABLE UP TO SIZE 18"



A. White



VULCAN SHIRT
 Slim fit, Long sleeve

Sizes:
 14" - 18"

Codes & Colours:
 7889A White



2270A
SELENE

ONE COLLECTION / BUSINESS ESSENTIALS

65% POLYESTER / 35% COTTON / 115gm MATCHING STYLES

WOMEN'S **SELENE** BLOUSE Semi fitted, Long sleeve

WOMEN'S **EOS** BLOUSE Semi fitted, Short sleeve

- 2 Button cuff (Selene)
- Large size range 4R - 30R
- Machine washable at 40°

Sizes: 4 - 30 regular



A. White



B. Blue



2271B
EOS

SELENE BLOUSE
Semi fitted, Long sleeve

Sizes:
4 - 30 regular

Codes & Colours:
2270A White
2270B Blue



EOS BLOUSE
Semi fitted, Short sleeve

Sizes:
4 - 30 regular

Codes & Colours:
2271A White
2271B Blue



SEMI FITTED

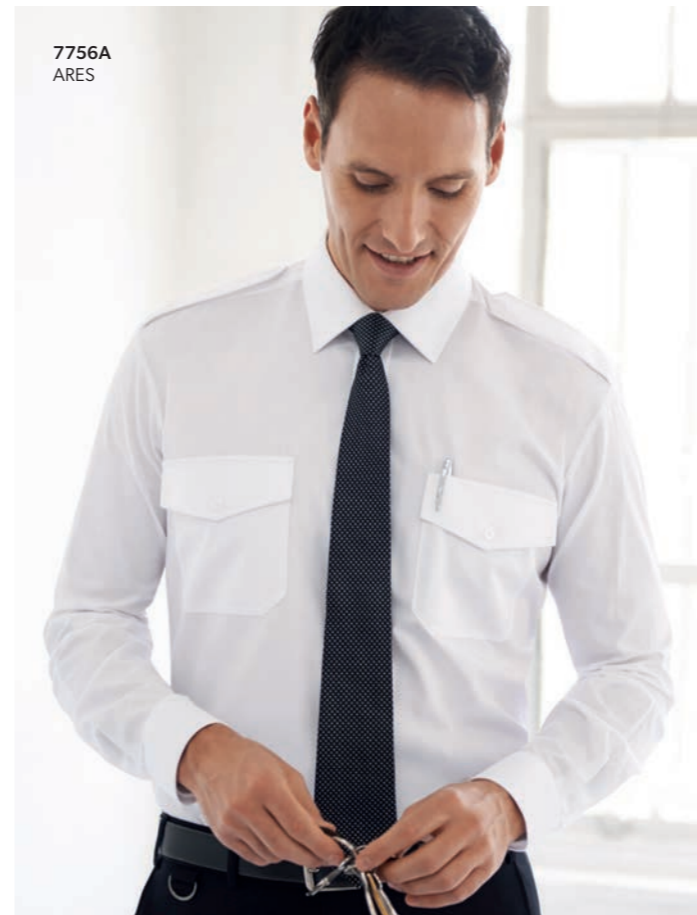
AVAILABLE UP TO SIZE 30R



7745A
HERMES



7746A
OLYMPUS



7756A
ARES



7842A
ORION

ONE COLLECTION / BUSINESS ESSENTIALS

65% POLYESTER / 35% COTTON - PILOT SHIRTS / 115gm

MEN'S **HERMES** Classic fit, Long sleeve pilot shirt
 MEN'S **OLYMPUS** Classic fit, Short sleeve pilot shirt

- 2 Button cuff (Hermes)
- Twin chest pockets with flap
- Pen holder
- Epaulettes
- Classic fit available up to collar size 22"
- Machine washable at 40°



A. White

HERMES PILOT SHIRT
 Classic fit, Long sleeve

Sizes:
 14.5" - 22"

Codes & Colours:
 7745A White



A. White

OLYMPUS PILOT SHIRT
 Classic fit, Short sleeve

Sizes:
 14.5" - 22"

Codes & Colours:
 7746A White



ONE COLLECTION / BUSINESS ESSENTIALS

65% POLYESTER / 35% COTTON - PILOT SHIRTS / 115gm

MEN'S **ARES** Slim fit, Long sleeve pilot shirt
 MEN'S **ORION** Slim fit, Short sleeve pilot shirt

- 2 Button cuff (Ares)
- Twin chest pockets with flap
- Pen holder
- Epaulettes
- Slim fit available up to collar size 18"
- Machine washable at 40°



A. White

ARES PILOT SHIRT
 Slim fit, Long sleeve

Sizes:
 14" - 18"

Codes & Colours:
 7756A White



A. White

ORION PILOT SHIRT
 Slim fit, Short sleeve

Sizes:
 14" - 18"

Codes & Colours:
 7824A White



CLASSIC FIT

AVAILABLE UP TO SIZE 22"

SLIM FIT

AVAILABLE UP TO SIZE 18"